



WAREHOUSE & DISTRIBUTION APPLICATION BROCHURE



CONTROLS 15

RACKS AND
LOADING 1

TASK 11

CORRIDORS &
STAIRWELLS 5

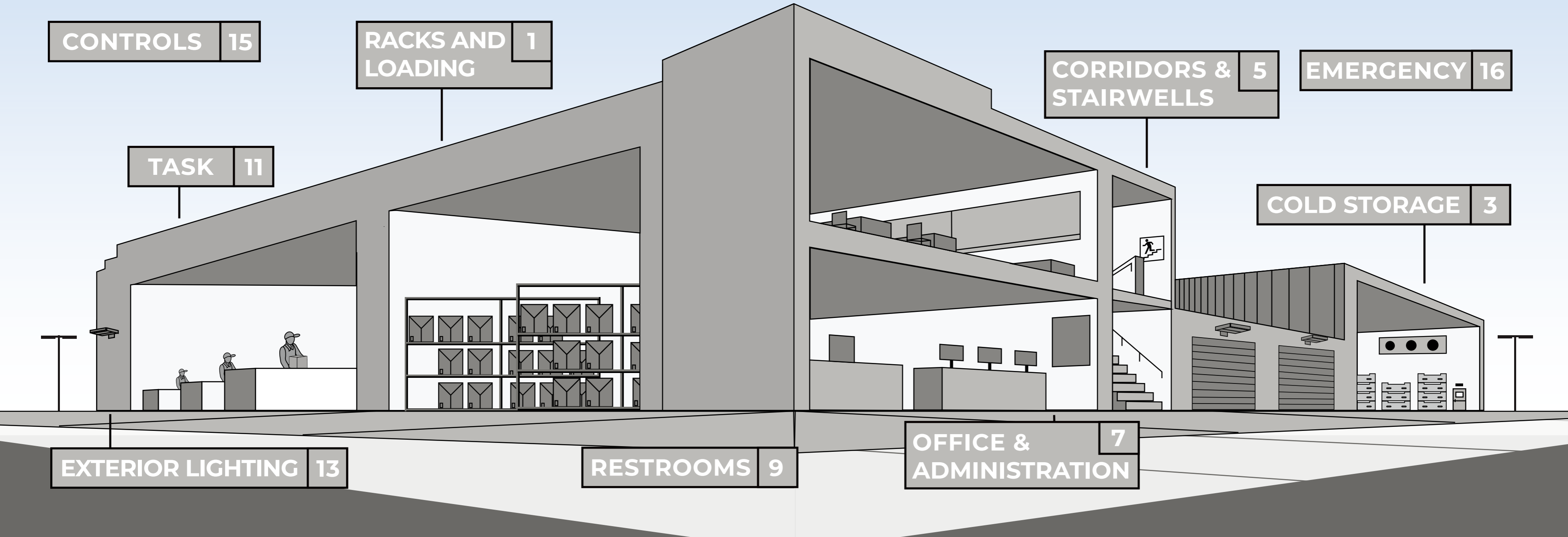
EMERGENCY 16

COLD STORAGE 3

EXTERIOR LIGHTING 13

RESTROOMS 9

OFFICE &
ADMINISTRATION 7



RACKS AND LOADING

Lighting in warehouses and distribution areas tends to require high lumen outputs from hard-to-reach locations. LED lighting is an obvious choice for these areas, as operators enjoy massive energy savings and reduced maintenance costs. Often the first target for facility retrofits, users also benefit from the uniformity provided by LED fixtures.

ENDEAVOUR HIGH BAY (EDV)



Endeavour is the most versatile and robust American Manufactured High Bay fixture on the market today. Endeavour is built to withstand high abuse applications with an IK10 impact rating - the highest impact rating. Endeavour's upright option provides enhanced full room illumination, while the high performance narrow and wide distribution optics provide superior horizontal or vertical light levels with excellent uniformity.



EVEREST HIGH BAY (EVT)

- 12,000 to 56,000 Lumens
- Compact size and high performance
- Wide & narrow distributions
- 2ft, 3ft, & 4ft fixture lengths



BLIZZARD HIGH BAY (BL)

- Robust & durable wide body vapor tight high bay
- Extremely high efficacy up to 168 lm/W
- 2ft & 4ft fixture lengths



LINEAR STRIP (VS)

- Architectural design LED Strip fixture
- Multiple dimming & sensor options
- 2ft, 4ft & 8ft lengths



SLIM STRIP (SS)

- Ultra slim architectural design strip fixture
- Pendant, ceiling and continuous row mounting
- 4' & 8' lengths



ROUND HIGH BAY (RB3)

- Aesthetically pleasing compact round high bay
- Frosted primary lens & diffusers provide smoothing optics
- 13,000 to 31,000 lumens



HID HIGH BAY LAMPS

- Replacements for up to a 400W HID light lamp
- Up-lighting eliminates shadows and creates a natural look
- Eliminates the ballast and operates off universal voltage (120-277V)



HID LOW BAY LAMPS

- Replace up to 175W HID lamps
- Suitable for use in totally enclosed fixtures
- Integral driver suitable for 120-277V



T5 LAMPS

- Replacements for up to a 54W T5HO lamp
- Meets NSF requirements, plastic construction will not shatter
- Options for plug and play ballast install, line voltage wiring, or external driver, are available



T8 LAMPS

- Options for plug and play ballast install, line voltage wiring, or external driver, are available
- Options for replacing most linear fluorescent lamps
- Wide light emitting area



COLD STORAGE

LED technology is ideal for freezers and refrigerated areas. Compared with incandescent or fluorescent lamps, LEDs emit a fraction of the heat and surpass both in terms of performance and product lifespan in cold temperatures. The benefits are reduced strain on cooling systems and reliable lighting in critical cold storage areas.

AMAZON VAPORTIGHT (WTZ)



WTZ Series is an industry leading vapor tight luminaire robustly designed for a wide variety of environments. Its sealed and gasketed NSF listed fiberglass enclosure is easy to service and clean, ideal for maintaining a safe environment for food and beverage processing. With an enhanced feature set including industry leading ambient operating temperatures, extremely high efficiency, three scalable fixture lengths, wide lumen range, various high impact lens options and multiple mounting options make the WTZ Series the absolute luminaire for any vapor tight application.



BLIZZARD HIGH BAY (BL)

- Robust & durable wide body vapor tight high bay
- Extremely high efficacy up to 168 lm/W
- 2ft & 4ft fixture lengths



X SERIES VAPOR TIGHT (WTX)

- Sealed & gasketed vapor tight
- Unique light bar technology
- Slim profile 4' & 8' lengths



VAPOR TIGHT (VVT)

- Enclosed & gasketed narrow body vapor tight
- Ranging 3,000 to 6,000 lumens
- 2ft & 4ft fixture lengths



VAPOR TIGHT RETROFIT KIT (VTR)

- Easy upgrade to LED
- Long list of compatible luminaires
- Installs in 4' or 8' housing in 5 mins or less



VAPOR TIGHT HB RETROFIT (BLR)

- Easy upgrade to LED
- Long list of compatible luminaires
- Installs in 4' housing in 5 mins or less

CORRIDORS & STAIRWELLS

Industrial stairwells, corridors, and walkways have unique lighting needs. Fixtures may have low mounting heights or need to be installed in awkward corners or areas exposed to the elements. Low-profile, robust, and easy-to-install solutions are recommended for these applications.

CAVERN STAIRWELL (CV)



ILP's Cavern Stairwell luminaire provides a safe, robust and attractive design ideal for wall or ceiling mounting. As stairwells are unoccupied 90% throughout the day, fully control light levels for both occupied and unoccupied areas with high/low user selectable bi-level dimming options for maximum energy savings. Cavern's specification design, performance, housing lengths, finishes, sensor and emergency options make it the proper choice for stairwell illumination.



LOW PROFILE STRIP (FZ)

- Highly versatile and efficient strip fixture
- Pendant, ceiling and continuous row mounting
- 2', 4' & 8' lengths



ADJUSTABLE TROFFER (VAT)

- Volumetric design
- Lumen & CCT selectable
- 1x4', 2x2' & 2x4' sizes



TROFFER KIT (LANCE)

- Architecturally designed volumetric troffer retrofit kit
- High efficacy - up to 151 lm/W for enhanced energy savings
- Advanced controls options for asset tracking



EDGE LIT FLAT PANEL (PAN)

- Slim low profile design with seamless finish
- Extremely long life
- 1x4', 2x2' & 2x4' sizes



VOLUMETRIC TROFFER (VOLA)

- Architecturally designed volumetric troffer
- High efficacy - up to 151 lm/W for enhanced energy savings
- Advanced controls options for asset tracking



CURVED WRAP (SQ)

- Sleek curved profile wrap fixture
- Suitable for installing in continuous runs
- 2', 4' & 8' lengths



T8 LAMPS

- Options for plug and play ballast install, line voltage wiring, or external driver, are available
- Options for replacing most linear fluorescent lamps
- Wide light emitting area



PL LAMPS

- Replacements for fluorescent lamps from 7W - 42W
- Bases compatible with most fluorescent pin sockets
- Options for plug and play ballast install or wiring to line voltage



SELECTFIT

- 4", 6", 8" & 9.5" form factors
- Adjustable lumen output & CCTs
- 120V or 0-10V dimmable



OFFICE & ADMINISTRATION

Just as important as the machine processes in industrial facilities is the work that happens in the offices and administration areas. Whether the goal is increasing working efficiency or creating a positive work environment, a well-designed lighting system helps employees focus on critical tasks and improves overall well-being.

ORBIT TRACK LIGHT



With a variety of mounting options, field-interchangeable TIR optics, snap-in light diffusion accessories, and customizable ordering options, GREEN CREATIVE's new track light is useful in almost any track lighting application. The ORBIT is a compact, lightweight, and robust U.S.-assembled solution which enjoys a 50,000-hour L70 lifetime rating. Select between low and high lumen outputs using the SelectDrive switch on the back of the fixture.



EDGE LIT FLAT PANEL (PAN)

- Slim low profile design with seamless finish
- Extremely long life
- 1x4', 2x2' & 2x4' sizes



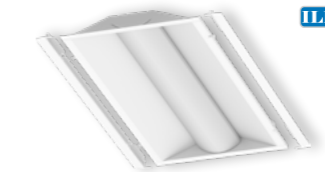
BACK LIT FLAT PANEL (VPAN)

- Lumen selectable output
- Low profile design
- 1x4', 2x2' & 2x4' sizes



VOLUMETRIC TROFFER (VOLA)

- Architecturally designed volumetric troffer
- High efficacy - up to 151 lm/W for enhanced energy savings
- Advanced controls options for asset tracking



TROFFER KIT (LANCE)

- Architecturally designed volumetric troffer retrofit kit
- High efficacy - up to 151 lm/W for enhanced energy savings
- Advanced controls options for asset tracking



T8 LAMPS

- Options for plug and play ballast install, line voltage wiring, or external driver, are available
- Options for replacing most linear fluorescent lamps
- Wide light emitting area



T5 LAMPS

- Meets NSF requirements, plastic construction will not shatter
- Options for plug and play ballast install, line voltage wiring, or external driver, are available



PL LAMPS

- Replacements for fluorescent lamps from 7W - 42W
- Bases compatible with most fluorescent pin sockets
- Options for plug and play ballast install or wiring to line voltage



SELECTFIT

- 4", 6", 8" & 9.5" form factors
- Adjustable lumen output & CCTs
- 120V or 0-10V dimmable



SPECFIT

- 4", 6", 8" & 9.5" form factors
- Adjustable lumen output
- TRUE CHROMA version available



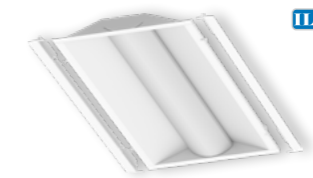
RESTROOMS

Whether you choose ambient light, accent light, or a mixture of both, washrooms in industrial spaces should be safe and hygienic. Ensure that the room is well-lit, especially in corners and along walls. High-quality occupancy sensors work well in restrooms, helping facilities save on energy bills.

CLICK WITH SENSOR



The integral passive infrared sensor of the CLICK surface mount fixture helps deliver a balance between high quality 90 CRI light and energy savings in variable occupancy spaces. Turning on instantly with room occupancy and off after ten minutes of room vacancy, the CLICK provides easy and reliable fixture control and performance.



TROFFER KIT (LANCE)

- Architecturally designed volumetric troffer retrofit kit
- High efficacy - up to 151 lm/W for enhanced energy savings
- Advanced controls options for asset tracking



VOLUMETRIC TROFFER (VOLA)

- Architecturally designed volumetric troffer
- High efficacy - up to 151 lm/W for enhanced energy savings
- Advanced controls options for asset tracking



EDGE LIT FLAT PANEL (PAN)

- Slim low profile design with seamless finish
- Extremely long life
- 1x4', 2x2' & 2x4' sizes



BACK LIT FLAT PANEL (VPAN)

- Lumen selectable output
- Low profile design
- 1x4', 2x2' & 2x4' sizes



LOW PROFILE STRIP (FZ)

- Highly versatile and efficient strip fixture
- Pendant, ceiling and continuous row mounting
- 2', 4' & 8' lengths



A LAMPS

- Suitable to replace 60W, 75W, 100W incandescent lamps
- Provides comfortable, diffused light
- Dimmable with forward and reverse phase controls



BR LAMPS

- Suitable to replace up to 65W incandescent lamps
- Provides comfortable, diffused light
- Dimmable with forward and reverse phase controls



T8 LAMPS

- Options for plug and play ballast install, line voltage wiring, or external driver, are available
- Options for replacing most linear fluorescent lamps
- Wide light emitting area



3NI

- 5", 7", 9" and 12" surface mount
- Adjustable CCT
- Direct ceiling, recessed housing & J-Box mounting options



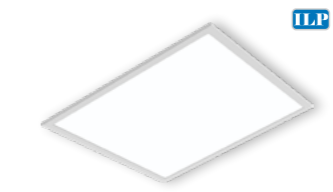
TASK

In addition to overhead lighting, industrial processes may require extra lighting for tooling or assembly work. These lights tend to have high lumen outputs and low mounting heights. Additionally, they often need to withstand sprays, debris, and impacts.

SLIM STRIP (SS)



The SS slim strip provides a modern and architectural design that can be ceiling, wall and suspension mounted. With a sleek ultra slim 2.36" width, multiple lengths, and low acquisition cost, the SS slim strip provides versatility and energy savings desired for new construction and retrofit applications.



BACK LIT FLAT PANEL (VPAN)

- Lumen selectable output
- Low profile design
- 1x4', 2x2' & 2x4' sizes



AMAZON VAPORTIGHT (WTZ)

- Sealed & gasketed vapor tight
- Durable construction for abusive environments
- 2', 4' & 8' lengths



CURVED WRAP (SQ)

- Sleek curved profile wrap fixture
- Suitable for installing in continuous runs
- 2', 4' & 8' lengths



VAPOR TIGHT (VVT)

- Enclosed & gasketed narrow body vapor tight
- Ranging 3,000 to 6,000 lumens
- 2ft & 4ft fixture lengths



LINEAR STRIP (VS)

- Architectural design LED Strip fixture
- Multiple dimming & sensor options
- 2ft, 4ft & 8ft lengths



LOW PROFILE STRIP (FZ)

- Highly versatile and efficient strip fixture
- Pendant, ceiling and continuous row mounting
- 2', 4' & 8' lengths



T8 LAMPS

- Options for plug and play ballast install, line voltage wiring, or external driver, are available
- Options for replacing most linear fluorescent lamps
- Wide light emitting area



T8 DEB LAMPS

- Double ended bypass installation
- FA8 base to retrofit into F96 strip fixtures
- Available in 4000K and 5000K



T5 LAMPS

- Replacements for up to a 54W T5HO lamp
- Meets NSF requirements, plastic construction will not shatter
- Options for plug and play ballast install, line voltage wiring, or external driver, are available



EXTERIOR LIGHTING

Outdoor lighting in industrial areas should prioritize safety and efficiency. Applications range from brightening parking lots and loading bays to illuminating signage and outdoor catwalks. And because many facilities are open 24/7, it is critical that these lights have the highest possible lifetime ratings.

SKYLINE AREA & FLOOD (SA/SF)



The Skyline's sleek aesthetic makes it perfectly-suited for warehouse area & flood applications. Designed for both new construction and retrofit, the Skyline provides a one-for-one solution for replacing legacy metal halide or high pressure sodium luminaires. Priced for payback, it's cost effective die-cast aluminum housings comes in 3-sizes and DLC Premium efficacies, making it the best choice for low acquisition cost and high energy savings. The highly configurable Skyline provides superior illumination, reliability, and ease of installation, exceeding most application requirements.



VIEWPOINT AREA LIGHT (VA)

- Type 3, 4, & 5 distributions
- Lumen selectable from 14,000 to 42,000 lumens
- Pole mount or slip-fitter



VIEWPOINT FLOOD (VF)

- 5 luminaire scales delivering 2,000-40,000 lumens
- CCT & lumen selectable (up to 14k lumens)
- Knuckle, Trunnion, Slip-Fitter, & Pole Mount Options



POLES & BRACKETS

- Straight square steel poles up to 40'
- Multiple bullhorn, wall, and wood pole mounting options
- Adapters for every site scenario



FULL CUTOFF WALL PACK (WPC)

- 2 sizes with multiple optical distributions
- Legacy aesthetic with next generation performance
- Sensor & wireless controls ready



SLIM WALL PACK (SWP)

- Fully adjustable with 5 light levels & 2 sizes
- CCT color selectable
- Optional sensors and battery backups



OW SERIES WALL PACK (OW)

- 3 luminaire scales delivering 1,000-16,000 lumens
- CCT & lumen selectable
- Integral battery backups available



SQUARE CANOPY (CP)

- Save up to 85% in energy
- White or bronze finish
- Microwave sensor ready



PARKING AND CANOPY (UFO)

- Visually comfortable illumination
- 10% uplight reduces cave effect
- Sensor & wireless controls ready



CF SERIES (CF)

- Site swappable optical patterns
- Field adjustable light output
- Dusk to dawn operation standard



CONTROLS SOLUTIONS

CONTROLS

The ability to control your light makes all the difference. Quality dimming solutions allow operators to set the mood of activity or to save energy during daytime hours. Smart controls and occupancy sensors can further reduce electricity consumption, resulting in massive savings over the long term. We provide various integrated control solutions that meet building codes compliance for ASHRAE 90:1, Title 24, etc.



EMERGENCY SOLUTIONS

EMERGENCY

Safety and security are essential components of any building's lighting design. In the event of a power failure, industrial spaces need a reliable emergency lighting solution. Emergency Drivers and Inverters are ideal for providing backup power if an outage occurs.



- Economical grouping solution
- Occupancy & daylight functions
- Programmable with phone app
- Wireless scalable design
- No gateway required

<https://ilp-inc.com/easy-sense/>



- Three upgradable tier solutions
- Occupancy, daylight, energy manager, & asset tracking capabilities
- Wireless scalable design
- Gateway for enhanced functionality

<https://ilp-inc.com/enlighted/>



- Occupancy & RF solutions
- Occupancy, daylight, & demand response capabilities
- Wireless scalable design
- Vive PowPak Dimming Module with 0-10 V

<https://ilp-inc.com/lutron-vive/>



GREENCREATIVE

- 5W, 10W, 23W versions
- Specifically designed to work with a wide variety of GREEN CREATIVE's lamps and fixtures
- Meets or exceeds all NEC and life safety code emergency lighting requirements
- CA Title 20 compliant version available

<https://greencreative.com/emergency-accessories/>



- IIS 35W and 50W Emergency Micro-Inverters
- ILB 5W to 20W EM battery backups
- Sine wave output inverter designed to provide power to the designated emergency lighting fixture
- Meets or exceeds all NEC and life safety code emergency lighting requirements
- CA Title 20 compliant version available

<https://greencreative.com/emergency-accessories/>



- 24.5W Constant current output power emergency battery backup perfect for high mounting applications to meet life safety codes.
- Built-in maintenance-free Ni-Cd battery
- Compact metal case with external installation
- Compliant to NFPA 101 safety regulation's requirements on Emergency power supply

**WAREHOUSE &
DISTRIBUTION
APPLICATION
BROCHURE**



GREENCREATIVE

www.greencreative.com



www.ilp-inc.com

An ILLUMUS Brand

www.ILLUMUS.com